

RSA Theatre Time!

We have 3 fantastic shows to choose from over the Summer Holidays. Don't miss out. Book by Friday **26th June** to secure your place!

Peter Pan: The Show at Kensington Gardens

Choice of either **28th July** or **20th August**

Matinee Shows starting **2.30pm**, duration **2 hrs** including interval

<http://www.visitlondon.com/peterpan/>

This summer, Kensington Gardens plays host to a unique and remarkable theatre event – a spectacular new stage production of J. M. Barrie's classic story, performed in a specially commissioned, state-of-the-art Theatre Pavilion.



For the first time in 100 years, Peter Pan is coming home...

Peter Pan Kensington Gardens promises to be a dramatic and truly magical summer experience in the park.

Conceived and staged by an award-winning creative team, the production will include a breathtaking **360-degree** projected scenic design.

Picnic in the theatre pavilion garden, soaking up the atmosphere, take a Royal Parks' Peter Pan tour culminating at the show or just make your way through the Kensington Gardens to Neverland.

Show Age Suitability

Peter Pan: The Show is suitable for all ages

We're Going on a Bear Hunt

6th August 11 am at **The Duchess Theatre, Catherine Street, London, United Kingdom, WC2B 5LA**

Following on from their Christmas hit *The Gruffalo*, London's Duchess Theatre is set to thrill young audiences once again with this charming theatre production.

Based on the classic picture book *We're Going on a Bear Hunt*, the story follows the exciting adventures of a family in search of an elusive bear.

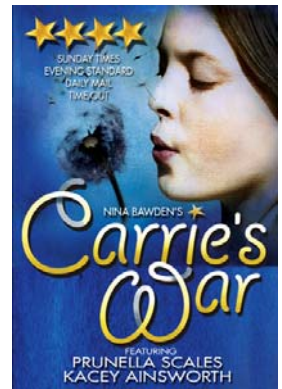
Travel through a magical world as the family wade, splash and squelch their way through a variety of imaginative environments in this fun-packed escapade.

We're Going on a Bear Hunt will have a strictly limited run in London, so book your tickets now!



Show Age Suitability

We're Going on a Bear Hunt is suitable for children **over 3** and **adults**



Carrie's War

**August 13th @ 2.30pm at The Apollo Theatre, Shaftesbury Avenue, London,
W1D 7EZ**

Carrie's War is an adaptation of the classic novel written by Nina Bawden in 1973 and captures the upheaval evacuation meant for thousands of City children. Some found themselves ensconced in alternative family life whilst others suffered the trauma of neglect. For Carrie and Nick it was an adventure.

Finding themselves living above a Grocery shop owned by unfriendly Mr Evans, they can thankfully enjoy the company of his loving sister Lou. Adventure and personal and emotional growth follow when they are sent to Druid's Bottom where another sister lives in isolation. Previously wealthy but now without money and dying, Dilys Gotobed is looked after by her housekeeper Hepzibah Green who is the font of wisdom and mystery for Carrie and Nick.

The book is brought to life in a stage play. A cast of 9 playing 15 characters. Some of the drama is heightened by singing of traditional Welsh songs and hymns, performed live by the cast. Well worth a look this summer.

Show Age Suitability

Carrie's war is suitable for children **over 7** and **adults**

Any questions to Katrina Saunders on 07768 485 358 or Katrinasau@hotmail.co.uk

Please reply as soon as possible, we need to have all return forms by **Friday 26th June 2009.**

Cheques to **Rosemead School Association** – tickets secured only with payment.



.....

Parent's name:.....Telephone Number.....

Child's name & ClassEmail:.....

Show	No. Children's Tickets	Total £ (Children's tickets)	No. Adults Tickets	Total £ (Adults Tickets)	Total £ (Children tickets plus Adult tickets)
<i>Peter Pan 28th July £20 Children, Adults £40</i>					
<i>Peter Pan 20th August£20 Children, Adults £40</i>					
<i>Carrie's War 13th August £12.50 Children, Adults £30</i>					
<i>We're Going on a Bear Hunt 6th August £8.50 Children, Adults £15</i>					
Total					